

WATERSTONE

RESERVE

Walker Design Build
Lot 7



Front Elevation

Features:

- First floor guest suite
- Energy star certified
- Large deck w/ outdoor living
- Rec Room
- 5519 SF of living space
- 724 SF unfinished space
- 5 bedroom / 5.5 bath
- 3 car garage

www.WaterstoneReserve.com

CALL 919.845.9909 OR EMAIL INFO@JIMALLEN.COM FOR INFORMATION

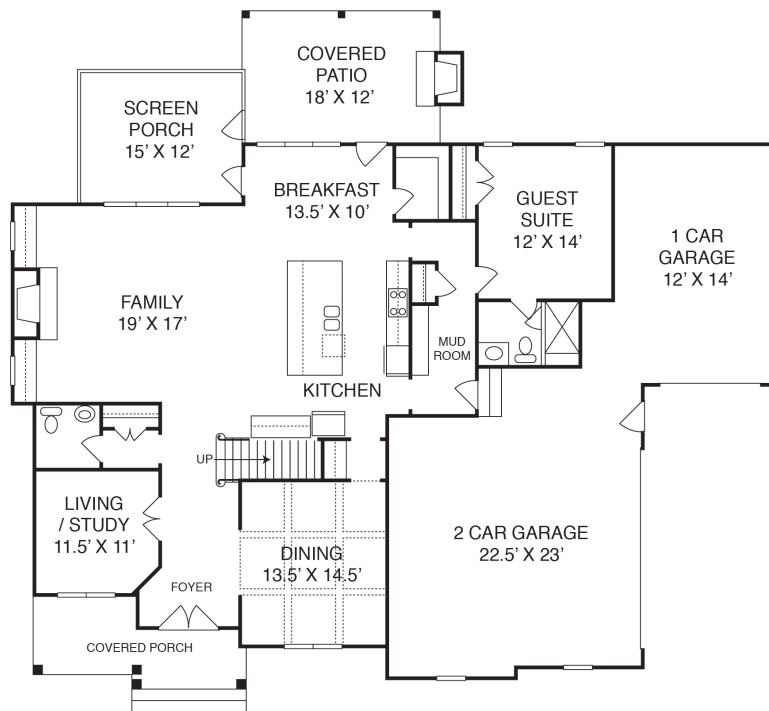
Sales and marketing by The Jim Allen Group Coldwell Banker Howard Perry and Walston.



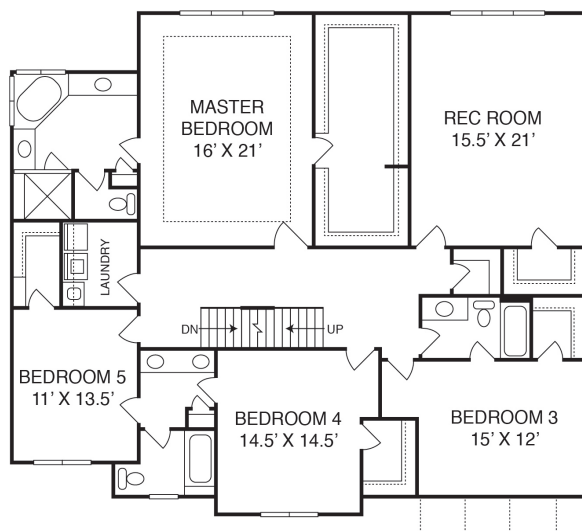
WATERSTONE

RESERVE

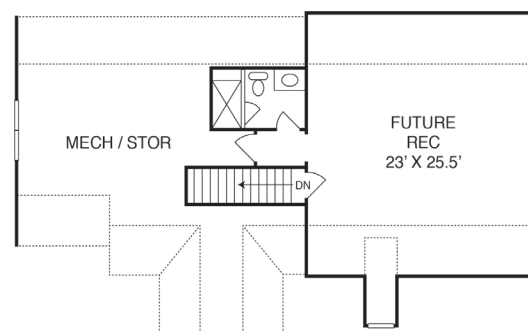
Walker Design Build
Lot 7



First Floor



Second Floor



Third Floor

Directions to Waterstone Reserve: From I-540 take Exit 16 onto US-1 N towards Wake Forest. Exit and turn left onto NC-98 E towards Durham. Proceed about 2 miles. Turn right on Camp Kanata Road, and the community entrance is ahead on the left.

CALL 919.845.9909 OR EMAIL INFO@JIMALLEN.COM FOR INFORMATION

Sales and marketing by The Jim Allen Group Coldwell Banker Howard Perry and Walston.

